

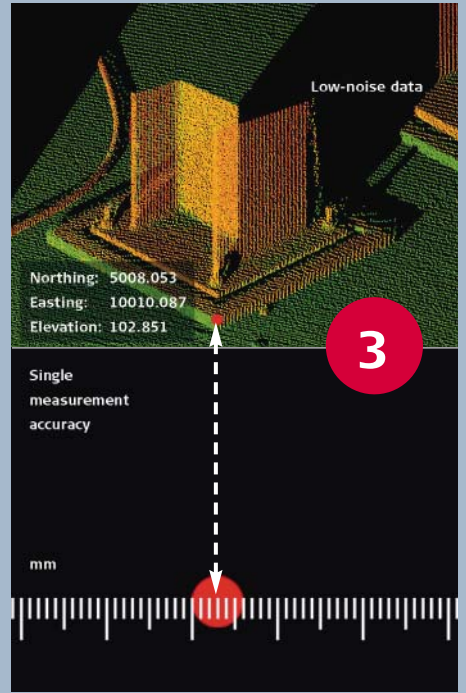
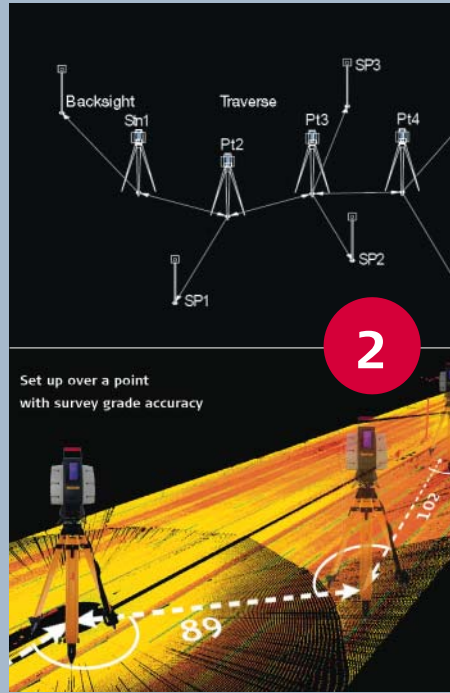
# Leica ScanStation

Leica ScanStation

Leica ScanStation is a high-precision 3D laser scanner used for capturing the geometry of objects and environments. It provides accurate point cloud data for various applications in surveying, construction, and industrial inspection.

Leica ScanStation offers a range of models and accessories to meet different project requirements.

Leica ScanStation is known for its high accuracy and reliability, making it a preferred choice for professionals in the field.



Leica ScanStation provides high-precision 3D data for various applications. It is used in surveying, construction, and industrial inspection. The scanner offers a range of models and accessories to meet different project requirements. Leica ScanStation is known for its high accuracy and reliability, making it a preferred choice for professionals in the field.

Leica ScanStation offers a range of models and accessories to meet different project requirements. It provides accurate point cloud data for various applications in surveying, construction, and industrial inspection. Leica ScanStation is known for its high accuracy and reliability, making it a preferred choice for professionals in the field.

Leica ScanStation is known for its high accuracy and reliability, making it a preferred choice for professionals in the field. It provides accurate point cloud data for various applications in surveying, construction, and industrial inspection. Leica ScanStation offers a range of models and accessories to meet different project requirements.

